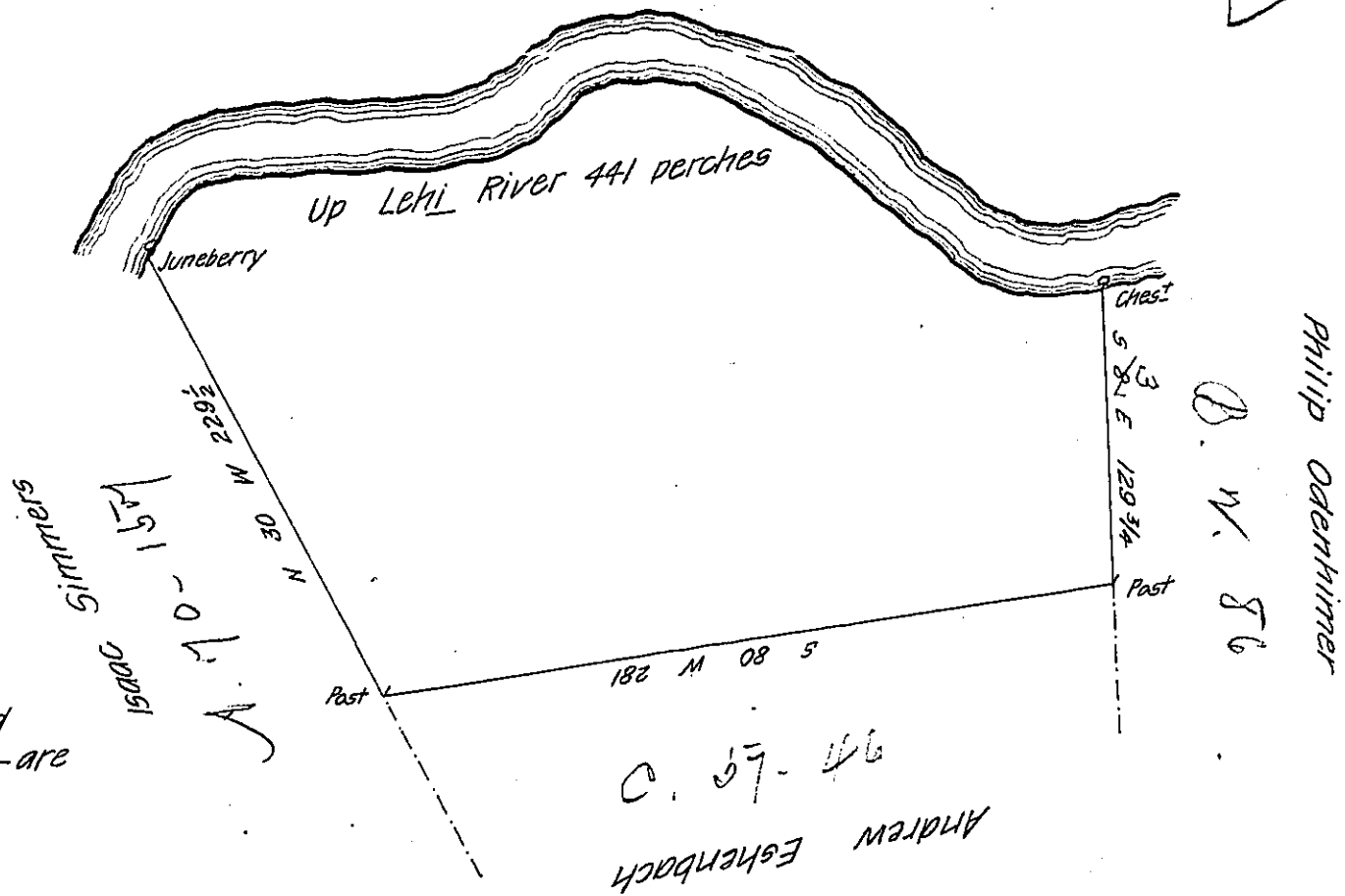


Penn Forest
CARBON.



The bearing- and
Distance- up Lehi- are

- 1 N 32 E 38
 - 2 N 85 E 80
 - 3 N 75 E 40
 - 4 N E - 28
 - 5 N 68 E 15
 - 6 N 80 E 20
 - 7 S 69 E 60
 - 8 S 42 E 96
 - 9 S 80 E 44
 - 10 East 20
- 441

By Virtue of a Warrant dated the 28th February 1793. Surveyed the
27th December 1794. to Philip Wager the above described tract of land Situate on
the East side of Lehi- in the County of Northampton Containing four hundred and
acres
twenty seven, one half and the allowance of Six P. Cent &c^d

P-

Geo. Palmer D.S.

To Daniel Brodhead Esq^r

Surveyor General.

IN TESTIMONY that the above is a copy of the original remaining on file in
the Department of Internal Affairs of Pennsylvania, made
conformably to an Act of Assembly approved the 16th day of
February, 1833, I have hereunto set my Hand and caused
the Seal of said Department to be affixed at Harrisburg,
this twenty first day of June 1907

Henry Howe
Secretary of Internal Affairs.